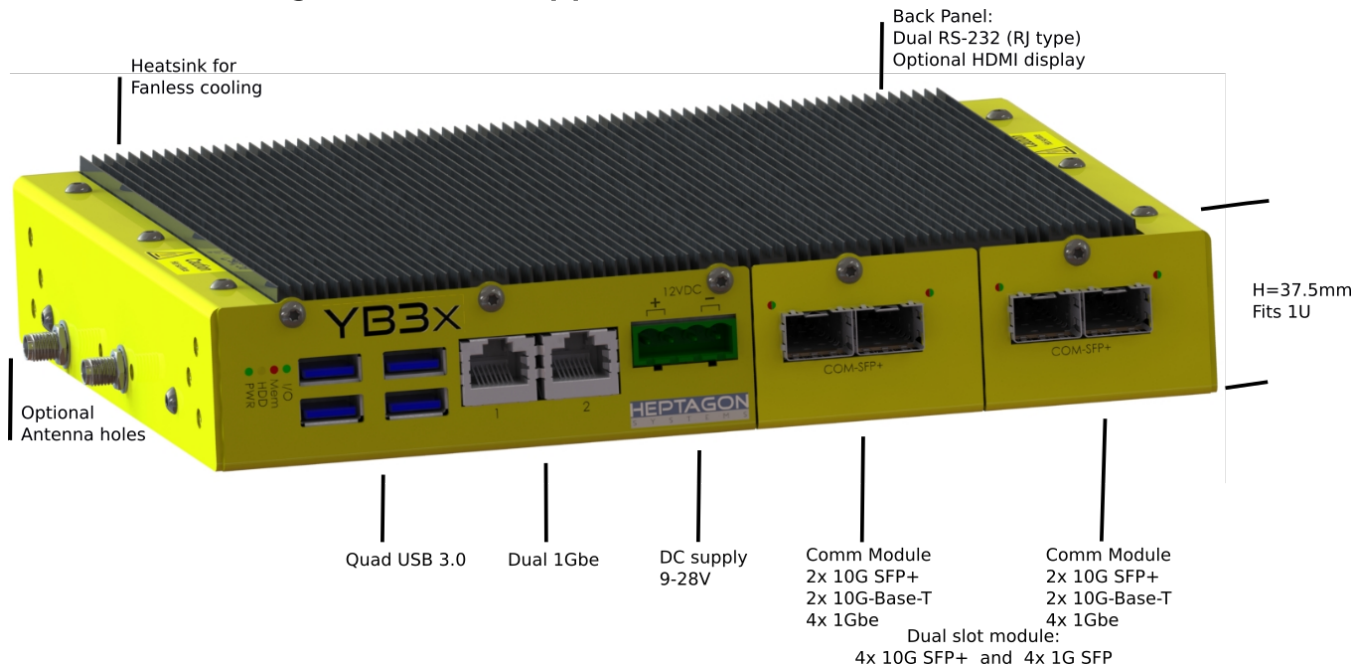


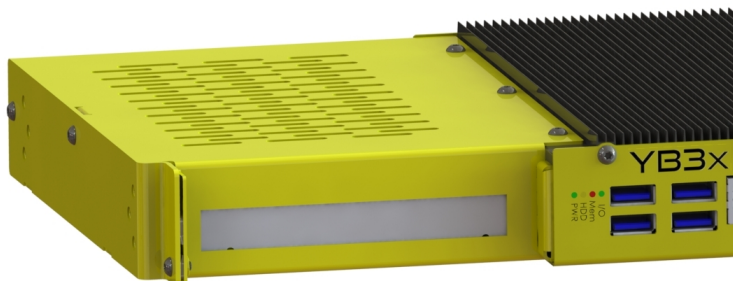
YB3x

IoT Edge / vCPE

A flexible IoT-Edge / Network appliance / Intel® Atom® C3000 Based



- Based on Intel® Atom® C3000 Series, 4-16 Cores (Denverton)
- Two slots of communication modules allowing mix and match of up to 4x 10G SFP+ and/or 4x 10G Base-T or 10x 1G Ethernet ports or any combination of 10G SFP+, 10G Base-T and 1GE. Two pairs of 1GE LAN bypass available.
- Wireless / Wan / BT trough M.2 and Min PCIe slots.
- Fanless and rugged design for harsh environments.
- Wide supply-voltage ranging from 9VDC to 28VDC.
- Optional PCIe 3.0 x8 slot extension which can accommodate full height PCIe Add-on card.



Processor	Intel® Atom® C3000 Series, 4-16 Cores		
Memory	2 x LP DDR4 ECC 2400/2133 MHz, up to 128GB		
Storage	NVMe SSD: M.2 KEY M, PCIe3.0 x4, 2260 or 2280 or 22110		
	SATA3 SSD: M.2 KEY B, 2260 or 2280		
	EMMC: Up to 128GB boot media		
Networking	10 Gigabit :		
	SFP+: 4x SPF+		
	RJ45: 4x 10GBase-T or		
	Mix: 2x SPF+ and 2x 10GBase-T		
	4x SFP+ (10G) and 4x SFP (1G) [available form Nov/19]		
Networking	Gigabit		
	2x 1Gbe ports		
	6x 1Gbe ports		
	10x 1Gbe ports		
	LAN bypass, Optional		
Networking	WWAN / WLAN: 4G,LTE,3G / 802.11ac/ad, Wireless Gigabit		
	Bluetooth: BT 5.0		
Display	HDMI, 4K, SM768 256MB display memory, Optional		
Interfaces	USB: 4x USB3.0		
	Serial ports: 2x RS232		
	CAN bus: Using mPCIe, Optional		
	Digital I/O, 2.5KV Optically isolated, 16 In + 16 Out, Optional		
Expansion Slots	PCIe 3.0, 8 lane, Add-on slot. Full Height, Half Length (FHHL), up to 25W total		
	M.2 M-KEY: 1x sockets, NVME, PCIe4		
	M.2 B-KEY: 1x socket, SATA, USB3.0/2.0 + SIM		
	M.2 E-KEY: 1x socket, PCIe1, USB2.0		
	MiniPCIe: 1x socket half size		
Management	BMC AST2400/2500, IPMI 2.0, DCMI, iKVM, Virtual Media, Optional		
Security	TPM 2.0, SLB9665		
	SECURE BOOT, SECURE FLASH		
Power	9-28VDC with Reverse polarity, Over/under Voltage protection		
Software support	Windows: Win 10 IoT, WS2016,WS2019		
	Linux®: All major distributions		
LED	Power, HDD, 2x GPIO		
Mechanical	DIMENSIONS: 209x187x37.5mm (WxDxH), WEIGHT: 1.1Kg +add-ons		
Environment	OPERATING TEMPERATURE	Standard	0°C to 50°C
		Extended*	-20°C to 60°C
		Industrial*	-30°C to 72°C and -40°C to 72°C
			* On selected configurations
Environment	STORAGE TEMPERATURE	-40°C to 85°C	
	HUMIDITY	95%@40°C (non-condensing)	
Certification	EMC: CE, FCC ,AS/NZS, SAFETY: IEC 60950-1, AS/NZS		
Contact	Email	sales@heptagonsystems.com	
	Web	www.heptagonsystems.com	